

Reorganizing DCPS Schools to Support Comprehensive Educational Programs and Services

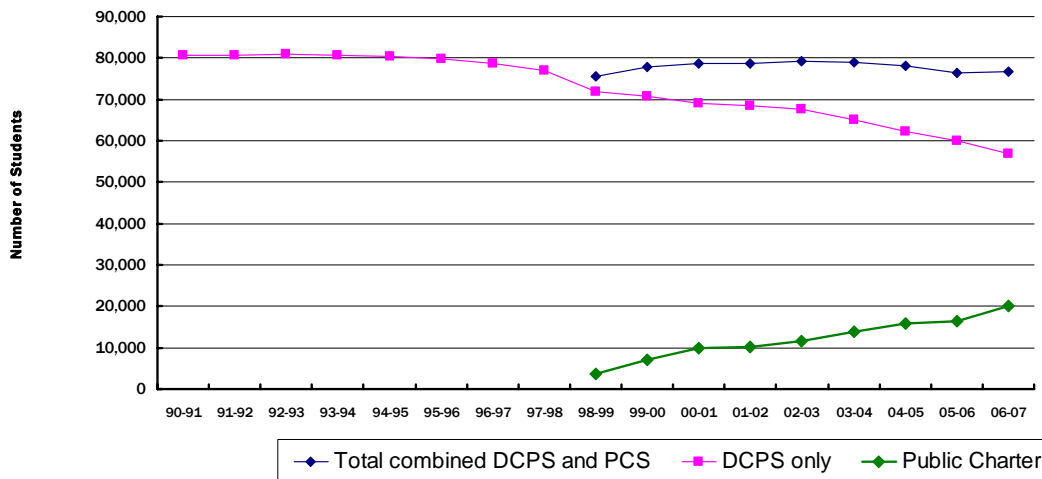
Supporting Documentation #1: Background on Need for Reorganization

A: Although the city's population has increased slightly since 2000, there was no corresponding growth in the number of school-age children.

Change in DC's Total Population and Children (Ages 5-17), 2000-2006			
	2000	2006	% change
Total Population	571,042	581,530	1.84%
School-age Children (Population Estimates)	102,844	100,024	-2.74%

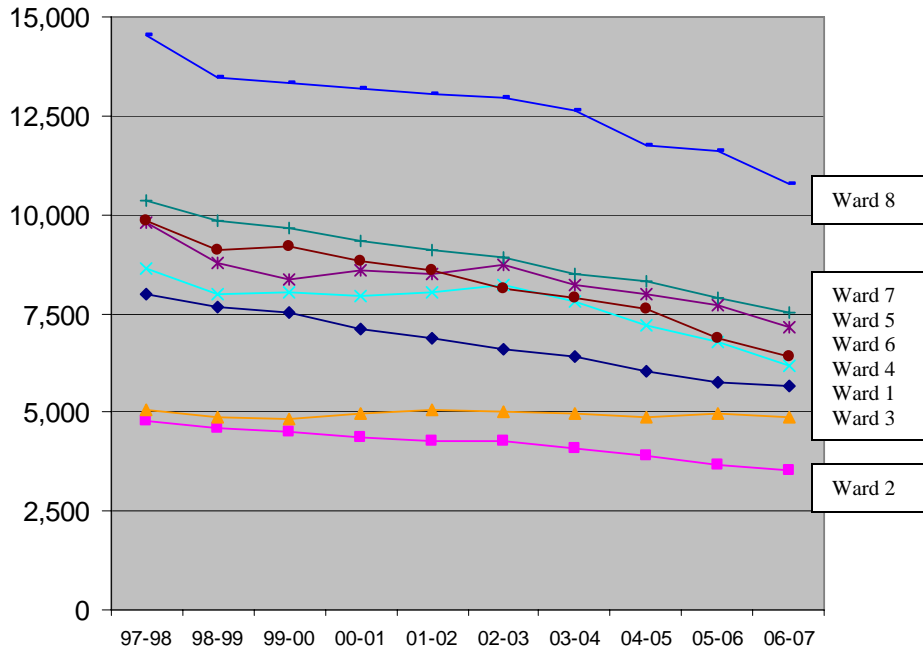
B: Student enrollment in DCPS has fallen and the number of students attending public charter schools has increased.

Enrollment for DCPS and Public Charter Schools



Sources: Office of State Superintendent of Education, October Audited Enrollment Data

C: DCPS Enrollment Trends Vary Greatly by Ward



D: DCPS has excess public school facility space in every ward but Ward 3

